

Installation of Bethlehem Reinforcing Bars in bridge deck. The two bridges used 389 tons of bars.



Improving a Highway in Eastern Pennsylvania



Francis C. Wagman (at left), and George A. Wagmon, contractors, refer to blueprint in checking progress of job.

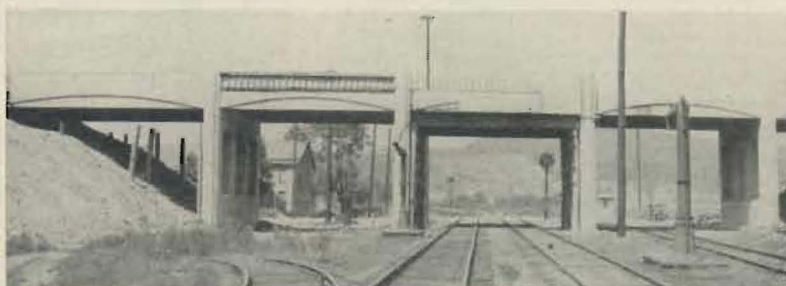
Continuing its highway improvement program, the Pennsylvania Department of Highways recently authorized relocation of 4913 ft of Route 24, near York, Pa. Included in the construction of the new 2-lane road were two reinforced concrete bridges. Contractor: G. A. and F. C. Wagman, Inc., Dallastown, Pa. In addition to structural steel and bridge reinforcing, Bethlehem furnished dowel units, cable guard rail, and steel posts.

BETHLEHEM STEEL COMPANY, BETHLEHEM, PA.

*On the Pacific Coast Bethlehem products are sold by
Bethlehem Pacific Coast Steel Corporation
Export Distributor: Bethlehem Steel Export Corporation*

STEEL FOR HIGHWAYS

Dowel Units • Reinforcing Bars • Bar Mats • Guard Rail
Guard Rail Posts • Wire Rope and Strand • Pipe
Hollow Drill Steel • Spikes • Bolts and Nuts
Timber Bridge Hardware • Tie-Rods
Sheet- and H-Piling • Fabricated Structural Steel



One of two new concrete bridges in the relocation project, shown above shortly before completion, carries the two-lane highway over railroad tracks.



Bethlehem Cable Guard Rail, mounted on Bethlehem Steel Posts at bridge approach, affords constant protection to motorists using the new highway.



Crane, rigged with heavy-duty wire rope, prepares to lower boom for new load. Bethlehem Wire Rope has many uses in road construction.