

ROADS AND STREETS

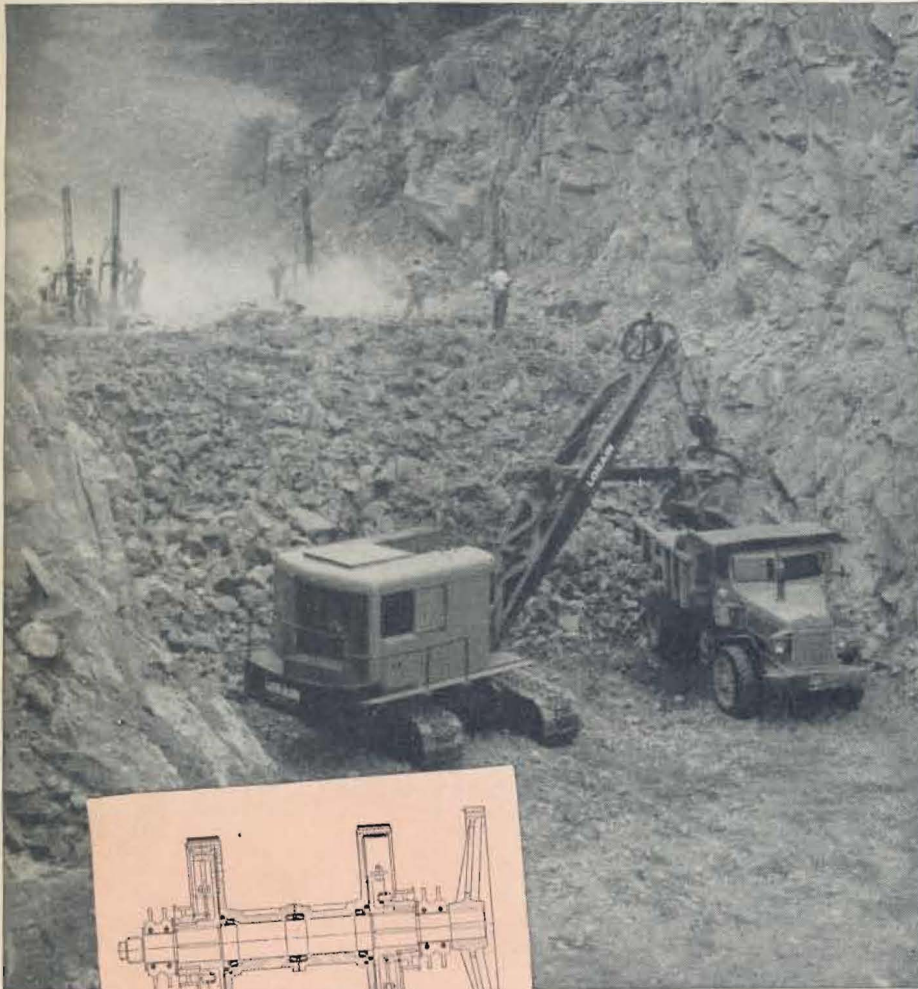
HIGHWAYS BRIDGES
AIRFIELDS
HEAVY CONSTRUCTION

B. I. T.
18 - 3. MRZ. 19
Nr. 4922
JANUARY 1954

Gillette Publishing Co., 22 W. Maple St., Chicago, Ill.
Form 3547 Requested

Acceptance Authorized Under Sec. 34.64 P. L. & R

Speeds new Massachusetts pike ... with help of TIMKEN® bearings

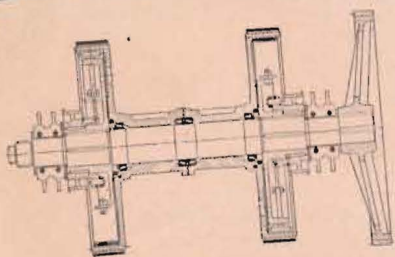


THERE were 1,500,000 yards of rock to move from this 4½ mile section of cuts on the new Boston to Lowell Turnpike. The whole job was done by this 2-yard Lorain 820-J Shovel and five of its brothers. To keep the shovels on the go with minimum time-out for maintenance and repairs, Timken® tapered roller bearings are used in the six turntable cone rollers, hydraulic coupling, horizontal swing drums, crowd and travel, and hoist drum of these 820-J's.

Timken bearings take the tough shock loads because they're case-hardened to give a tough, shock-resistant core and a hard, wear-resistant surface. Their tapered construction enables them to take both radial and thrust loads in any combination. Drums are held in rigid, positive alignment. Wear is minimized.

Because they keep drums and shafts concentric, Timken bearings make closures more effective. Lubricant stays in, rock dust and moisture stay out. Lubrication and maintenance time are held to a minimum.

No other bearing gives you all the advantages you get with Timken tapered roller bearings. Make sure they're part of the equipment you build or buy. Look for the trade-mark "Timken" on every bearing. The Timken Roller Bearing Company, Canton 6, Ohio. Canadian plant: St. Thomas, Ontario. Cable address: "TIMROSCO".



How THEW SHOVEL COMPANY mounts the hoist shaft of its 2-yard Lorain 820-J Shovel on Timken tapered roller bearings for minimum maintenance and long life.

TIMKEN
TRADE-MARK REG. U. S. PAT. OFF.
TAPERED ROLLER BEARINGS



NOT JUST A BALL NOT JUST A ROLLER THE TIMKEN TAPERED ROLLER BEARING TAKES RADIAL AND THRUST LOADS OR ANY COMBINATION